



CAUTIONARY STATEMENT

Certain information contained or incorporated by reference in this presentation and related material, including any information as to our strategy, plans or future financial or operating performance and other statements that express management's expectations or estimates of future performance, constitutes forward-looking statements. All statements, other than statements of historical fact, are "forward-looking statements". Generally "forward-looking statements" can, but not always, be identified by the use of forward-looking terminology such as "plans", "expects" or "does not expect", "budget", "envisages", "schedule", "estimates", "forecasts", "proposes", "intends", "anticipates" or "does not anticipate", or "believes", or variations of such words and phrases, or statements that certain actions, events or results "may", "could", "would", "might" or "will" be taken, occur or be achieved. Forward-looking statements are necessarily based on a number of estimates and assumptions that, while considered reasonable by the Corporation, are inherently subject to significant business, economic and competitive uncertainties and contingences. Known and unknown risks, uncertainties and other factors may cause the actual results to differ materially from those projected in the forward-looking statements and those forward-looking statements are not guarantees of future performance. Such factors include, but are not limited to: the interpretation of drill results and the estimation of mineral resources and mineral reserves, the geology, grade and continuity of mineral deposits, claim/royalty boundaries, the possibility that future exploration, development or mining results will not be consistent with the Corporation's expectations, metal price fluctuations, environmental and regulatory requirements, availability of permits, accidents, equipment breakdowns, title matters, labour disputes or other unanticipated difficulties with or interruptions in exploration or development activities, the inherent uncertainty of production and cost estimates and the potential for unexpected costs and expenses, commodity price fluctuations, currency fluctuations, failure to obtain adequate financing on a timely basis, and other risks and uncertainties. Should one or more of these risks and uncertainties materialize, or should underlying assumptions prove incorrect, actual results may vary materially from those expressed or implied in forward-looking statements made by or on behalf of the Corporation. Accordingly, readers are advised not to place undue reliance on forward-looking statements. Except as required under applicable securities legislation, the Corporation undertakes no obligation to publicly update or revise forward-looking statements, whether as a result of new information, future events or otherwise.

The technical information in this corporate presentation has been reviewed and approved by Richard DeLong, P. Geo, Director of Riley Gold Corp. and a 'qualified person', as defined by National Instrument 43-101, Standards of Disclosure for Mineral Projects.

HIGHLIGHTS

- ✓ **Kinross Earn-In announced March 2024 on Riley's PWC Project**
- ✓ **Drilling Commenced July 2024 – Continuing Q2 2025**
- ✓ **PWC Project Adjoins Nevada Gold Mines (“NGM”) Cortez & Pipeline Complex (Battle Mtn / Eureka Trend, Nevada). NGM is a JV amongst Barrick & Newmont**
- ✓ **Tight share structure** - management ownership of approx. 21%
- ✓ **Proven management team** - mine finding, development, production, capital raising and mergers & acquisitions

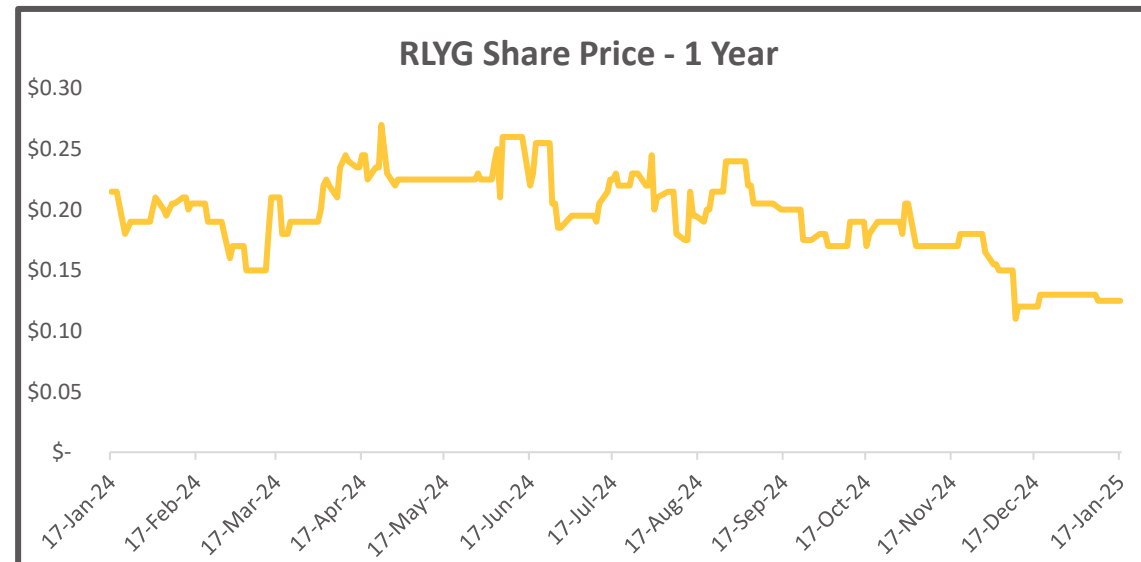
CAPITAL STRUCTURE

Capital Structure (as at January 17, 2025)	
Issued & Outstanding	42,182,880
Options Outstanding (average exercise price: C\$0.22)	4,025,000
Warrants outstanding	10,000,000
Fully Diluted	56,207,880
Market Capitalization @ C\$0.125	C\$5.3M
Cash (September 30, 2024)	C\$2.3M

Strategic Shareholders:



21% Insider Ownership



PROVEN LEADERSHIP TEAM

William Lamb, Chairman of the Board

- 25 years of experience in mineral processing and project development, including 5 construction projects through to operations
- Former CEO of Lucara Diamond Corp. Played integral role in taking Lucara's flagship mine (Karowe) from feasibility to production, returning more dividends to shareholders than equity raised in the Company.

Todd Hilditch, CEO & Director

- 25 years of experience in mineral exploration, mergers & acquisitions, fundraising and public company management.
- Has successfully provided several accretive transactions to shareholders including:
 - the sale/RTO (\$340M transaction value) of Salares Lithium to Talison Lithium (world's largest hard rock lithium producer) providing a 1000%+ return to early-stage investors
 - the sale of URZ Energy Corp. (co-founded) to Azarga Uranium Corp.; sale of Azarga to Encore Energy (EU:NASDAQ); the sale of Terraco Gold Corp. (co-founded) to Sailfish Royalty Corp.; plus, a variety of other value-added asset/company transactions

Bryan McKenzie, CFO & Corporate Secretary

- 15 years + of international accounting, tax and financial management/reporting experience (including transactional experience).
- Brings a varied knowledge of finance, tax, accounting, auditing and public markets.

Paul Dobak, Technical Advisor (PWC Project)

- Former Chief Geologist, Barrick Gold.
- Supported development of district exploration programs in Nevada at Cortez, Goldstrike, Turquoise Ridge, Bald Mountain and in Alaska at Donlin Creek resulting in significant gold resource/reserve growth
- Supported the discovery of the Goldrush and Fourmile gold mines (Cortez District)
- Former Senior Geologist Newmont in charge of exploration and development of projects within Carlin Trend

Ted Wilton, Technical Advisor (Tokop / Nevada)

- Direct practical experience related to reduced intrusion-related gold systems having worked with Kinross Gold at the Ft. Knox Mine as Chief Geologist and with Victoria Gold at the Eagle/Dublin Gulch Deposit (now mine) as Vice-President Exploration.
- Participated in exploration programs that discovered eight ore deposits containing more than ten million ounces of gold.

DIRECTORS

William Lamb, Chairman of the Board

- 25 years of experience in mineral processing and project development, including 5 construction projects through to operations
- Former CEO of Lucara Diamond Corp. Played integral role in taking Lucara's flagship mine (Karowe) from feasibility to production, returning more dividends to shareholders than equity raised in the Company.

Todd Hilditch, CEO & Director

- 25 years of experience in mineral exploration, mergers & acquisitions, fundraising and public company management.
- Has successfully provided several accretive transactions to shareholders including:
 - the sale/RTO (\$340M transaction value) of Salares Lithium to Talison Lithium (world's largest hard rock lithium producer) providing a 1000%+ return to early-stage investors
 - the sale of URZ Energy Corp. (co-founded) to Azarga Uranium Corp.; the sale of Terraco Gold Corp. (co-founded) to Sailfish Royalty Corp.; plus, a variety of other accretive asset/company transactions

Richard DeLong, Independent Director

- Current President and Principal Scientist of Reno, Nevada based EM Strategies, Inc.
- 40 years experience in regulatory and statutory requirements for permitting the development of mineral resources in the United States.

Cyndi Laval, Director

- Partner at Gowlings WLG (Canada) LLP. Named one of Vancouver's 30 leading lawyers by the National Post.
- Specializing in mergers & acquisitions, mining law, corporate finance and securities & business law.

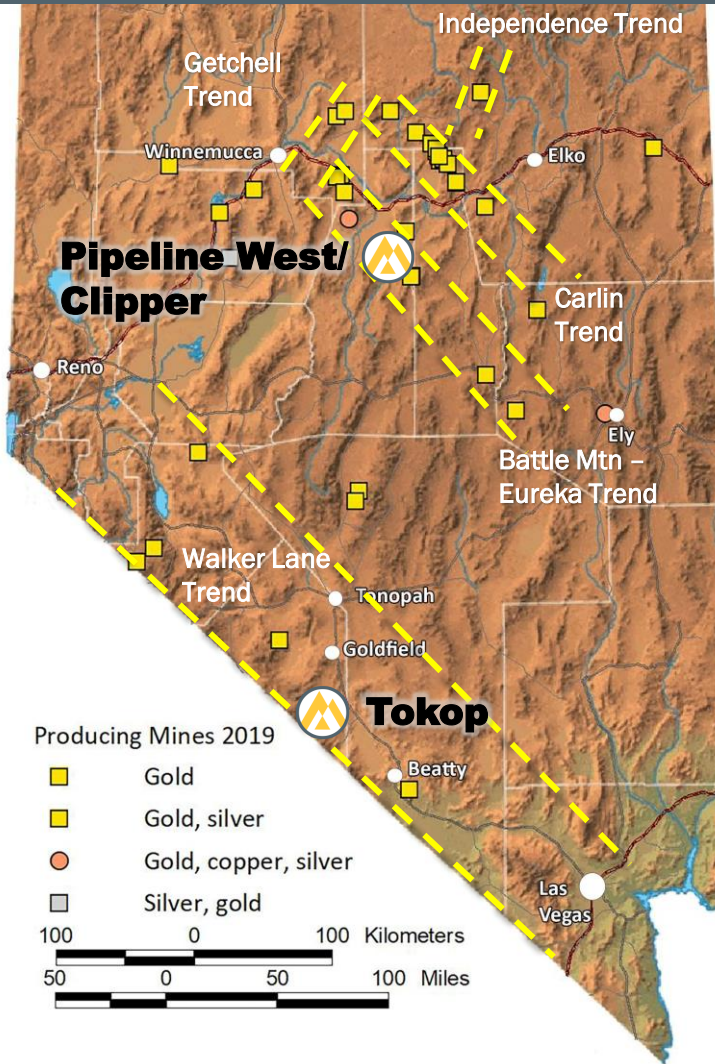
John Schaff, Independent Director

- 30 + years of geological experience in exploration and development (at junior and senior mining companies).
- Actively participated in numerous discoveries including Kennecott's Gemfield, Midway, and Castle Au deposits in Nevada and the Whistler Cu-Au deposit in Alaska.

Thomas Patton, Independent Director

- 40 years of geological experience in exploration and development (at junior and senior mining companies).
- Lead the exploration team that discovered the Peñasquito silver-gold-lead-zinc deposit in Zacatecas, Mexico (currently the largest producing gold and silver mine in Mexico).

NEVADA – TOP MINING JURISDICTION



The state is the **world’s 6th largest gold producing region** with four major gold “trends”: Carlin, Battle Mountain – Eureka, Getchell trends and Walker Lane.

Gold production in Nevada totaled a **little more than 4.02 million ounces in 2022** (according to the figures from the Nevada Division of Minerals).

Riley Gold’s projects lie within two of these prolific trends:

- **Tokop:** Walker Lane Trend
- **Pipeline West/Clipper:** Battle Mountain – Eureka Trend

The Fraser Institute ranks Nevada as a top mining jurisdiction in the world.

TWO NEVADA CORNERSTONE PROJECTS



Tokop Gold Project

- 100% owned land package of more than **31 sq km**
- Close to operating mines and infrastructure
- 2021 drilling completed: most significant intercept of **9.32 gpt gold over 2.6 metres**, including **17.1 gpt gold over 1.4 m**
- Rock samples to date, returned assays from trace to significant high-grade material up to **72 gpt gold** and **970 gpt silver**
- Historical Drilling includes 12m at 2.54 g/t Au



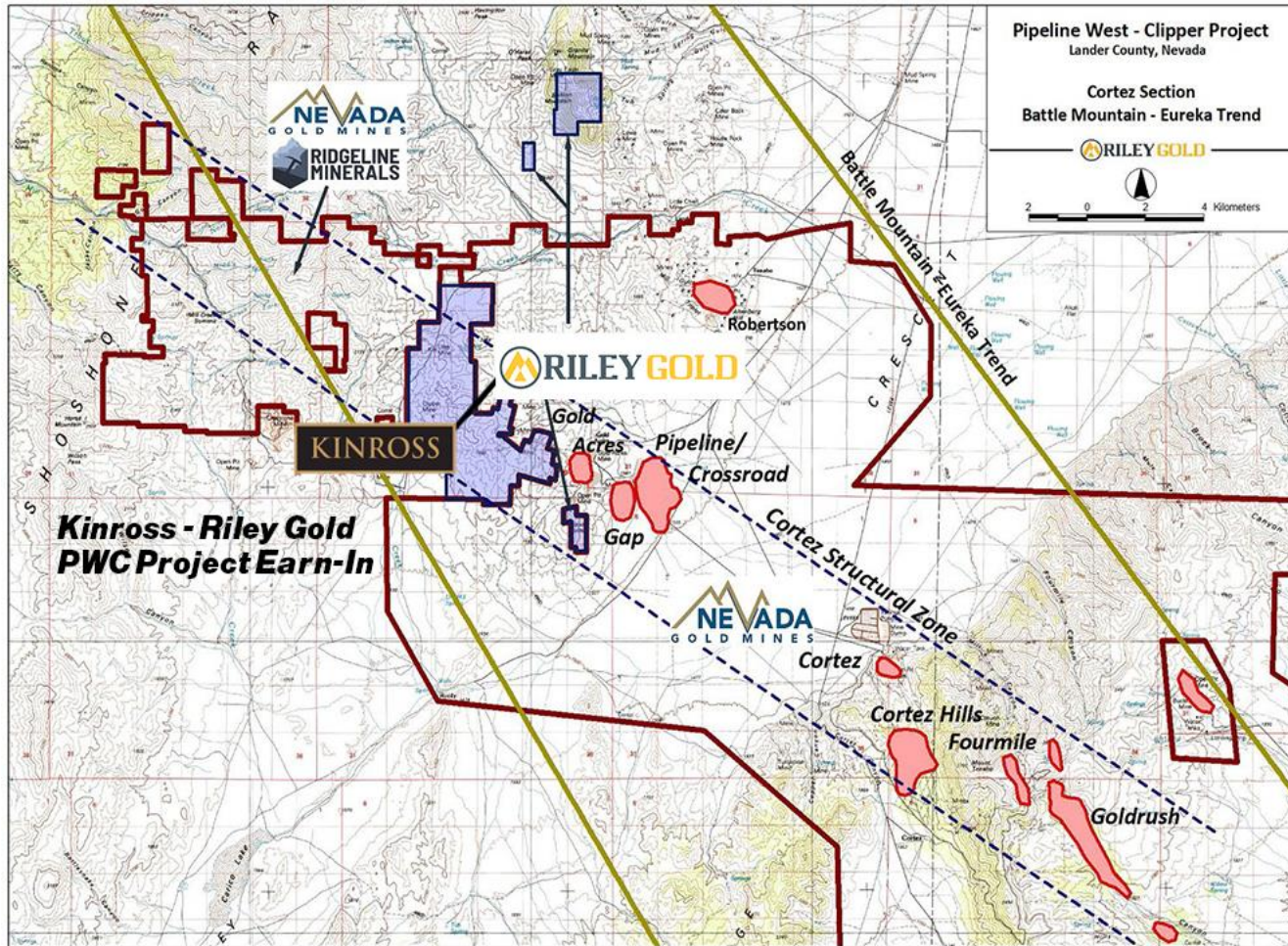
Pipeline West/Clipper Gold Project

- Kinross earn-in on Riley's 100% owned land package of **24.7 sq km**
- **Ideally positioned** on the Cortez Complex operated by Nevada Gold Mines and the Swift Project JV between Ridgeline Minerals and Nevada Gold Mines
- Exploration planning is underway by Kinross Gold

KINROSS



PWC GOLD PROJECT – STRATEGICALLY LOCATED



Ridgeline and NGM Project areas are approximate.

Bordering projects and land packages include:

-  **Pipeline Complex** – owned and operated by the Nevada Gold Mines JV (Barrick & Newmont).
-  **Swift Project** – a joint venture between Ridgeline Minerals and the Nevada Gold Mines JV (September 2021). Operated by the Nevada Gold Mines JV - part of Tier One assets



PIPELINE WEST/CLIPPER GOLD PROJECT (“PWC GOLD PROJECT”)

PWC Gold Project (Kinross operated) is located in Lander County (Cortez District), approximately 80 km southwest of Elko.

On strike and adjoins NGM’s Cortez District, with a **gold endowment** of more than **50 million ounces (Moz)** (past production + current reserves & resources).

Nearby deposits in the Cortez District include:

Pipeline Complex (23 Moz Au):

- Pipeline, Pipeline South, Gap, Crossroads, & Gold Acres

Cortez Complex (27 Moz Au):

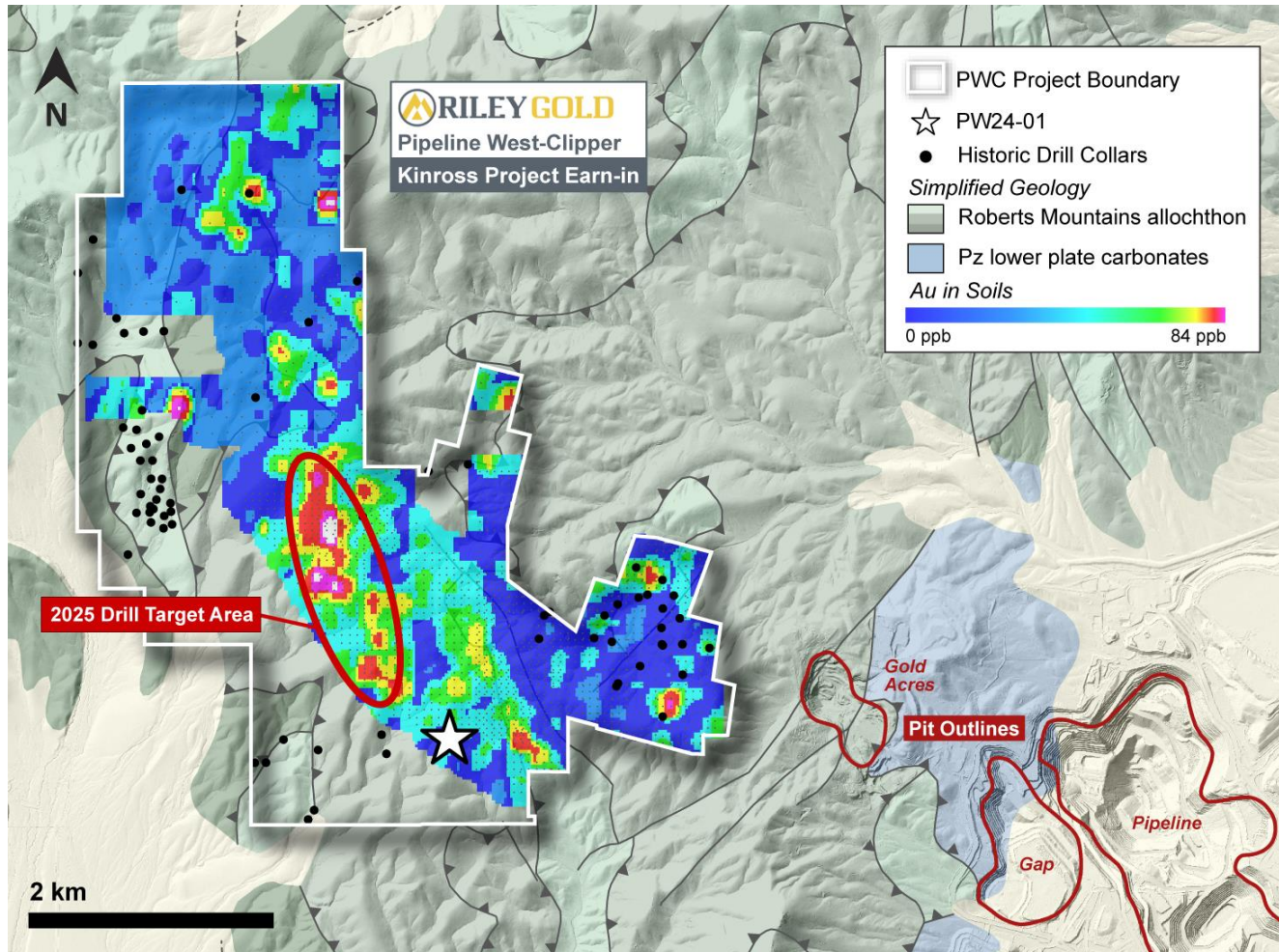
- Cortez Hills - Pediment, Four Mile, Goldrush, & South Goldrush



PWC GOLD PROJECT- KINROSS EXPLORATION AGREEMENT

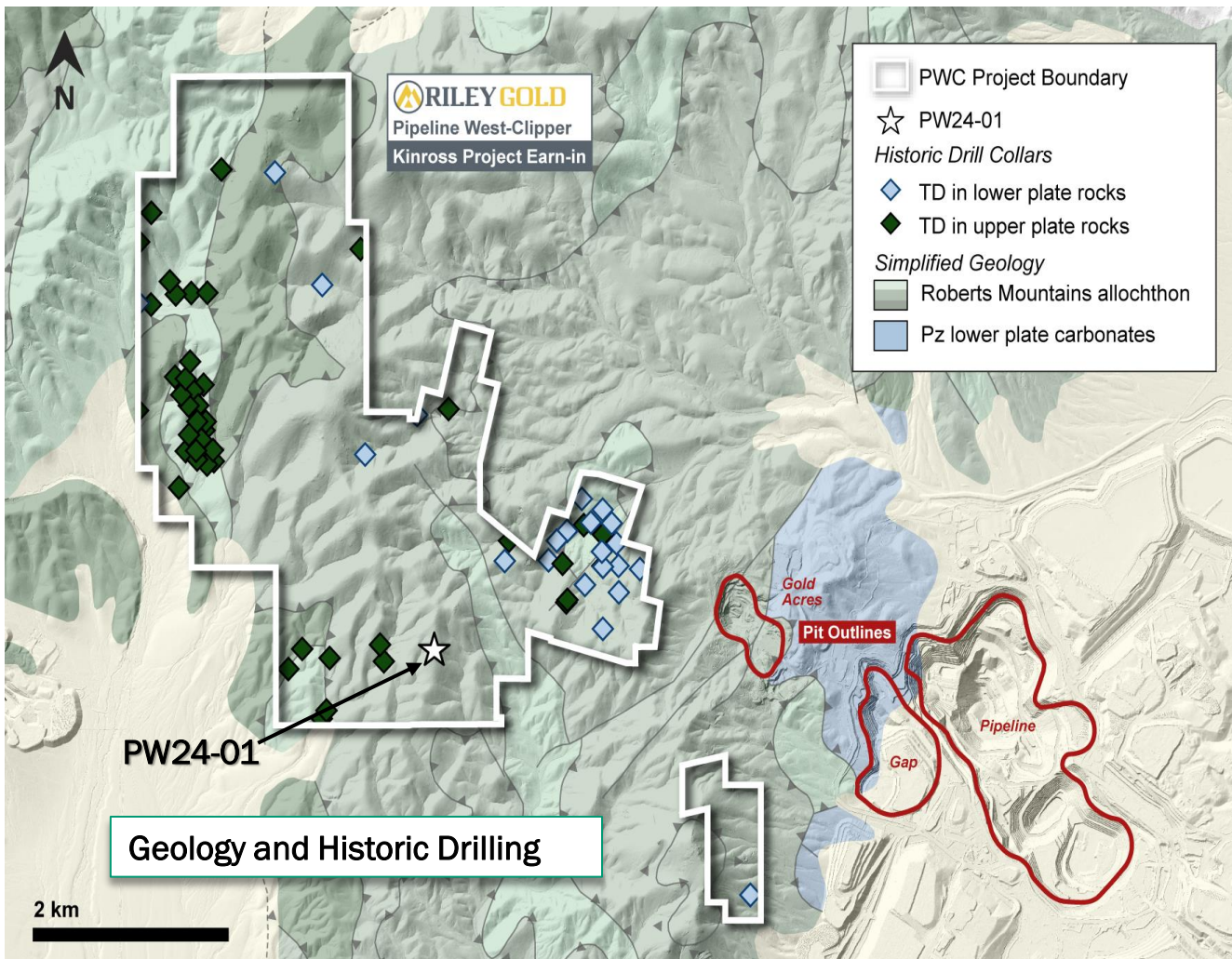
- Ⓐ **First Earn-In Right:** Kinross will assume operatorship of the project and can earn an initial 60% interest by incurring a minimum of US\$10 million in qualifying work expenditures within five years as follows:
 - US\$1.5 million in guaranteed work expenditures on or before 18 months following execution of the Agreement which shall include a minimum of 2,200 meters of core drilling (within three geographically distinct targets).
 - An additional US\$2.5 million in work expenditures on or before 3rd anniversary of the Effective Date.
 - An additional US\$2.0 million in work expenditures on or before 4th anniversary of the Effective Date.
 - An additional US\$4.0 million in work expenditures on or before 5th anniversary of the Effective Date.
- Ⓐ **Second Earn-In Right:** Kinross shall have the right to earn an additional 15% interest (for a total 75% interest) by incurring a minimum US\$10 million in qualifying work expenditures within an additional two-year period following exercise of the Initial Earn-In Option.
- Ⓐ **Project Technical Committee:** A Project Technical Committee to be formed including members of both Riley Gold and Kinross.
- Ⓐ **Dilution Provision:** Should Riley Gold's interest be diluted to 10% or less, the Company's interest will be converted to a 2% net smelter return royalty.
- Ⓐ **Investment:** Purchased 9.9% of Riley Gold's common shares on a diluted basis.

KINROSS 2025 DRILL PLANNING



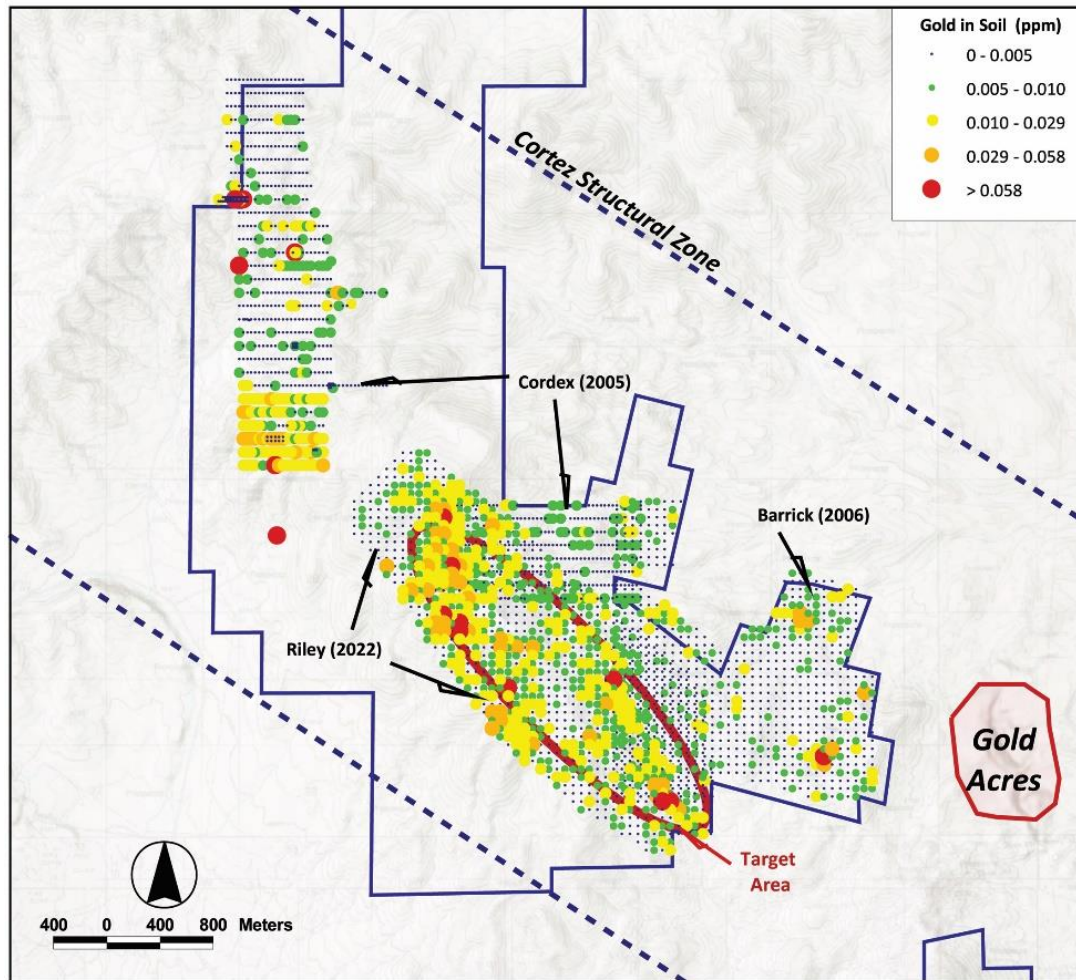
- ⚠ The **Pipeline West/Clipper Gold Project** property lies less than 2.5 km west of Pipeline Mine and 0.6 km west of the Gold Acres open pit.
- ⚠ Exploration is targeting the same rock formations as those that host Pipeline Complex orebodies; the Horse Canyon, Wenban, and Roberts Mountain formations.
- ⚠ PW24-01 (noted by the white star) was drilled Fall 2024 to 1,100 meters based on a geophysical signature and provided a strong stratigraphic understanding which returned strong pathfinder elements.
- ⚠ Framework drilling in 2025 will step out to the NW up to 2.5km in an area of significantly increased gold soil samples at/near the intersection of two structures.

KINROSS 2024 DRILL HOLE PWC 01-24



- 📍 Kinross exploring for Carlin type host rocks in a setting analogous to the “Fourmile” deposit. First hole targeted a geophysical signature.
- 📍 Returned strong stratigraphy understanding and elevated pathfinder elements assisting in spotting future drill holes.
- 📍 PW24-01 successfully intercepted a 1,248 ft (380m) thick section of lower plate host rocks (structurally thickened Devonian Wenban).
- 📍 PW24-01 demonstrates that known Cortez District host lithologies exist at explorable drill depths over a contiguously large, untested area proximal to the Pipeline complex area.
- 📍 Thick upper plate section preserved in hanging wall of interpreted high angle (down to the west) fault.

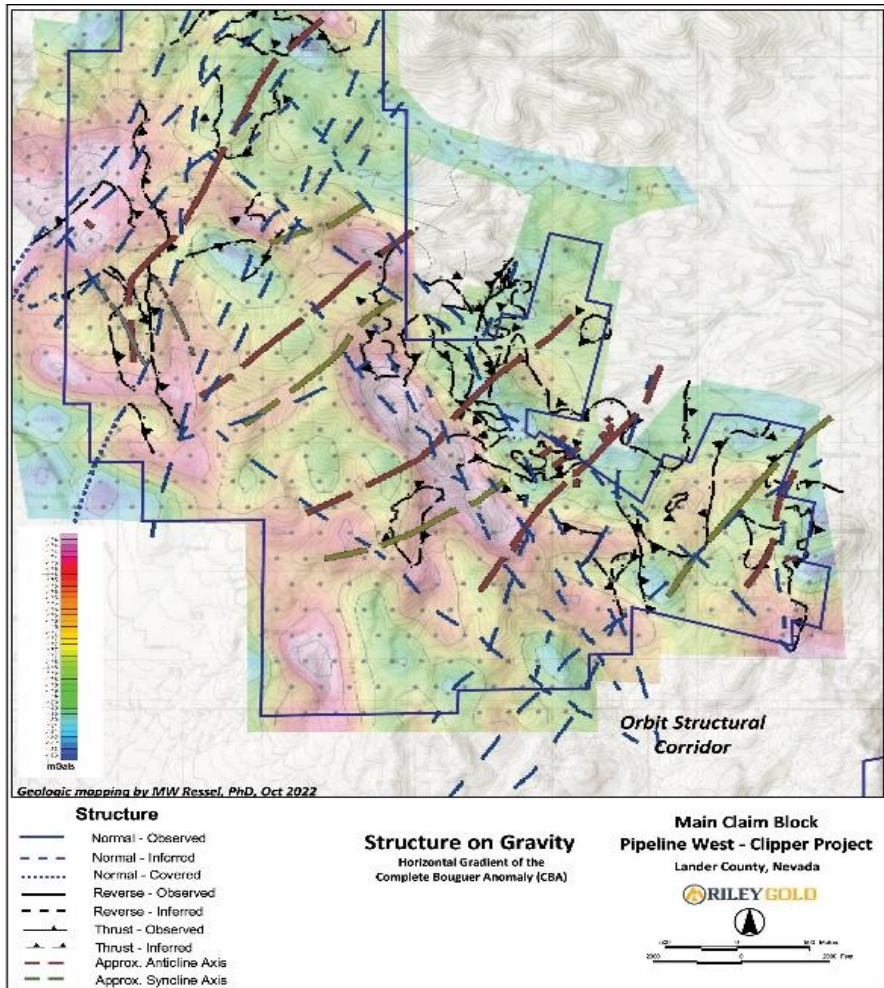
PWC GOLD PROJECT – RILEY GOLD IN SOILS SURVEY



The red ellipse locates what may be a prospective target for a Goldrush or Fourmile style structurally controlled, Carlin type of deposit at depths of less than or equal to 500 m

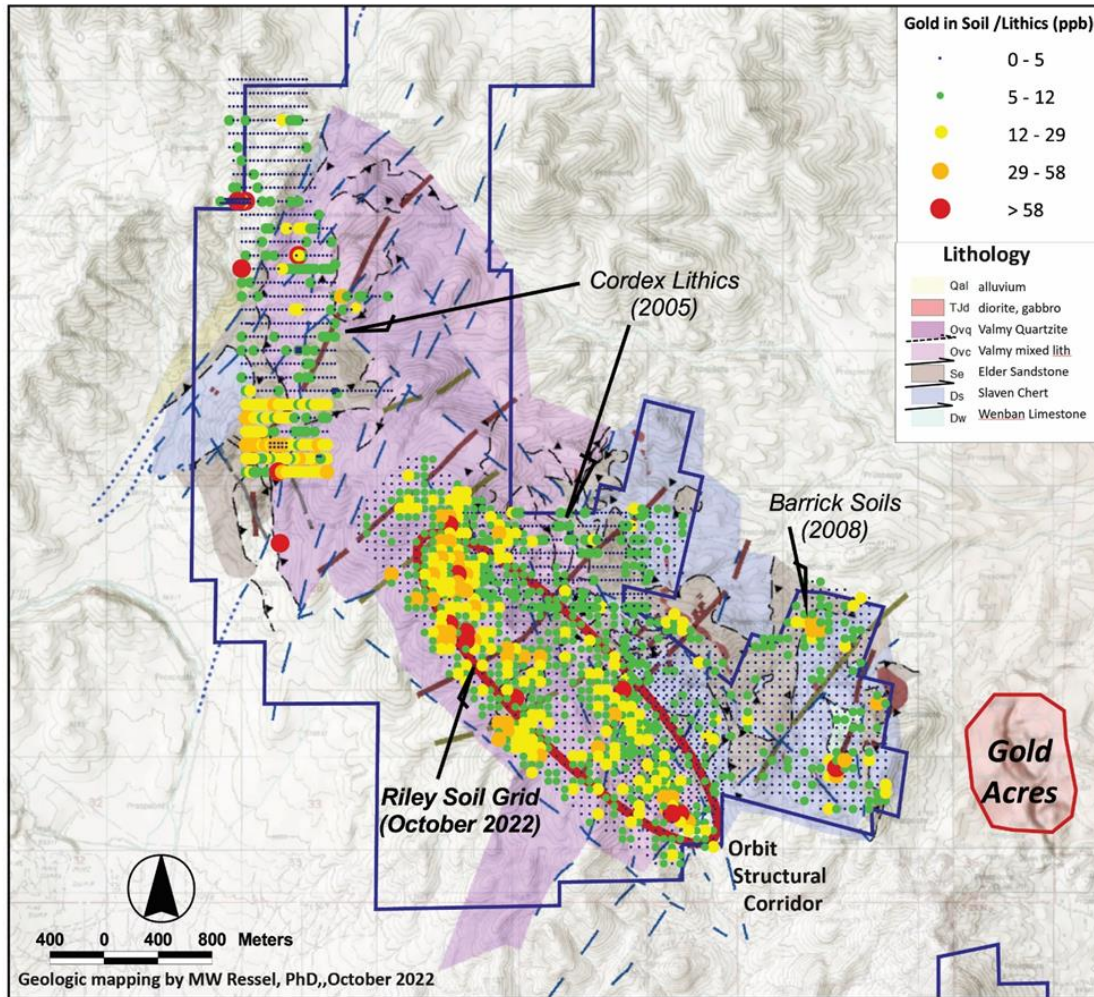
- Updated gold-in-soil results (Feb 2023) indicate gold is strongly anomalous within the 3km target strike length compared to older surveys.
- Survey also revealed that arsenic, antimony, silver, and other pathfinder metal anomalies were not only confirmed by new sampling over older sampling grids, but revealed new, even stronger values in areas not previously sampled.
- This target area has never been drilled yet on trend with NGM's Cortez Complex.

PWC GOLD PROJECT – MAPPED STRUCTURE ON GRAVITY



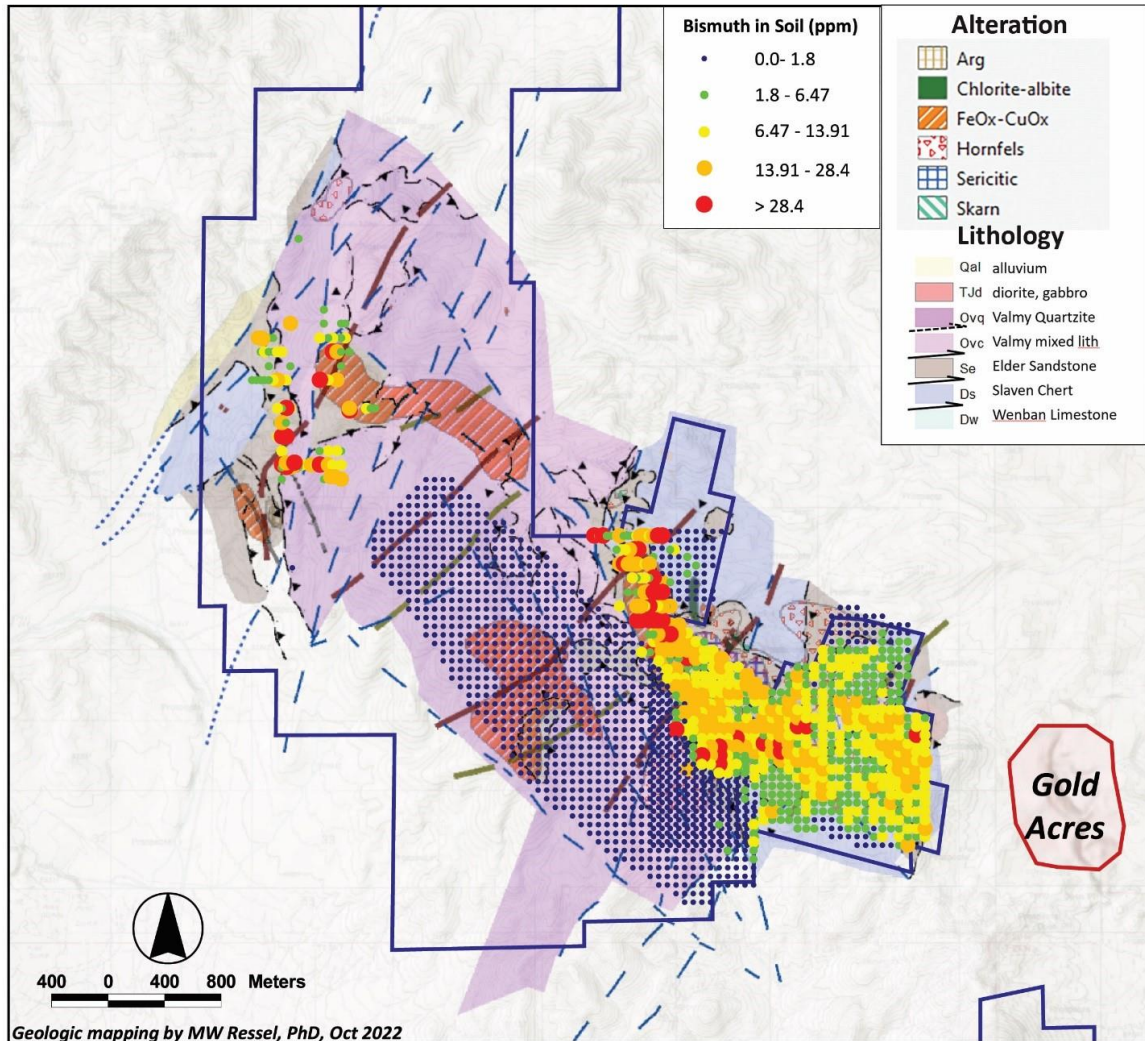
- 📍 New geology map (Dr. Mike Ressel – Fall 2022) highlights northwest trending structural zone originally interpreted from the horizontal gradient (HG) of Complete Bouguer Anomaly (CBA) gravity.
- 📍 Second structural corridor, this trending northeasterly, coincides with similar features first interpreted from both horizontal gradient of the CBA gravity and the first vertical derivative of the Reduced to Pole (RTP) magnetics.
- 📍 Similar orientations of faults are recognized to control Carlin-type gold mineralization at the nearby Gold Acres-Pipeline mines

PWC GOLD PROJECT- GOLD IN SOILS ON GEOLOGY



- Gold-in-soil values (ppm) are overlain on geology.
- Anomalies coincide with a northwesterly structural trend from the southeast corner of the postulated target zone northwest through the center of the target area.
- Orbit structural zone, was a fluid migration pathway and may play host to structurally controlled Carlin-type gold mineralization.

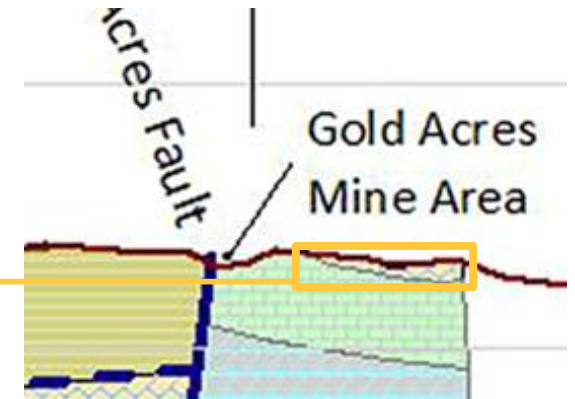
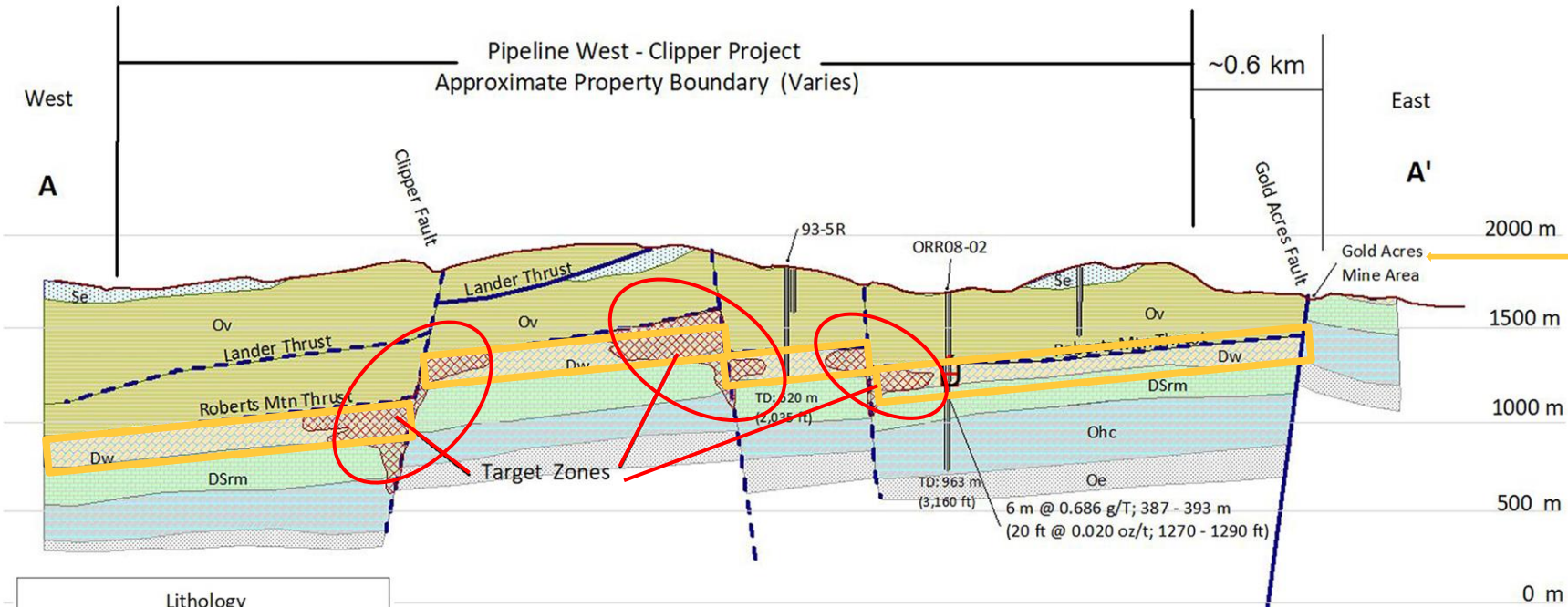
PWC GOLD PROJECT – INTRUSIVE RELATED SOILS ON ALTERATION



Bismuth in soil

- ⚠ An additional consideration at PWC is that of silver, base metals, and bismuth anomalies related to reduced, intrusion-related gold systems.
- ⚠ This signature dominates areas of hornfels and skarn alteration peripheral to the ~105 million year old (Ma) Gold Acres stock.
- ⚠ By way of comparison, hornfels proximal to the Tenabo stock show similar metal associations and host 1.3 million ounces in the measured and indicated gold resources plus 1.1 million ounces in inferred gold resource at NGM's Robertson property only 4 km from PWC.

PWC GOLD PROJECT – WENBAN TARGET CONCEPT

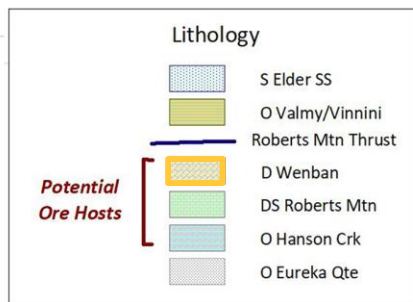


Schematic Cross-Section A - A'
Pipeline West - Clipper Project
(Not to Scale)

Geology Modified after Barrick 2009 & Wrukke, 1974, USGS MF647

Primary Targets include carbonate units of the Devonian Wenban Fm (Popovich equiv.) Devonian/Silurian Roberts Mountain Fm & Ordovician Hanson Creek Fm.

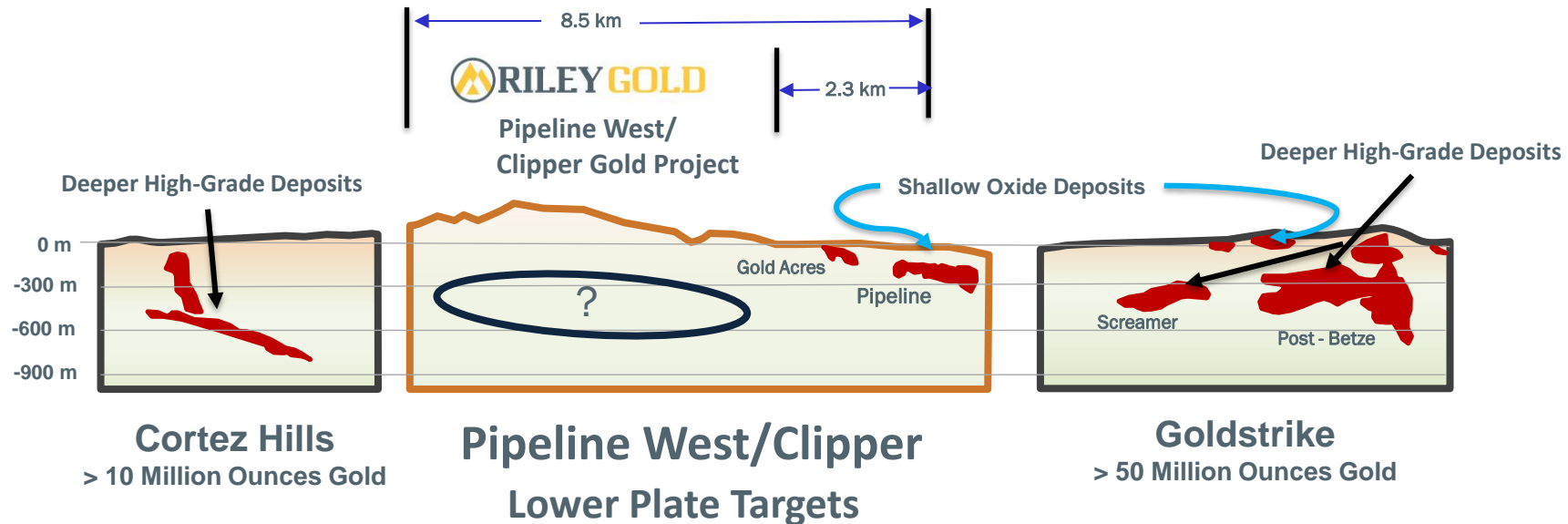
Targets could be anywhere from 300 m to more than 700 m deep..



- The Wenban is the favourable host to gold in the Cortez District
- Riley will target areas defined by geophysics and mapping where the Wenban is intersected by faulting

PWC GOLD PROJECT – TARGETING GAP FOR CARLIN OREBODIES

Drilling 300-700 metres deep will target large, **high-grade Carlin-Type orebodies** at Pipeline West/Clipper Gold Project.



All sections drawn to the same approximate scale

ACTIVITIES RAMPING UP AT PWC GOLD PROJECT

Oct 2020

- Riley Options Two Nevada Gold Projects: **Tokop** and **Pipeline West/Clipper**

May 2021

- Pipeline West/Clipper Project extended by acquisition of adjacent property - now totaling **24.7 square km**

Fall 2022

- Extensive 1,046 soil sample program completed
- Dr. Mike Ressel mapping completed of approx. 12.2 sqkm

Feb 2023

- Successful soil sample results released (elevated)
- Dr. Ressel mapping published identifying geology/structures that coincide strongly with soil results and surface leakage

March 2024

- **USD\$20,000,000 EARN-IN SIGNED WITH KINROSS ON PWC**

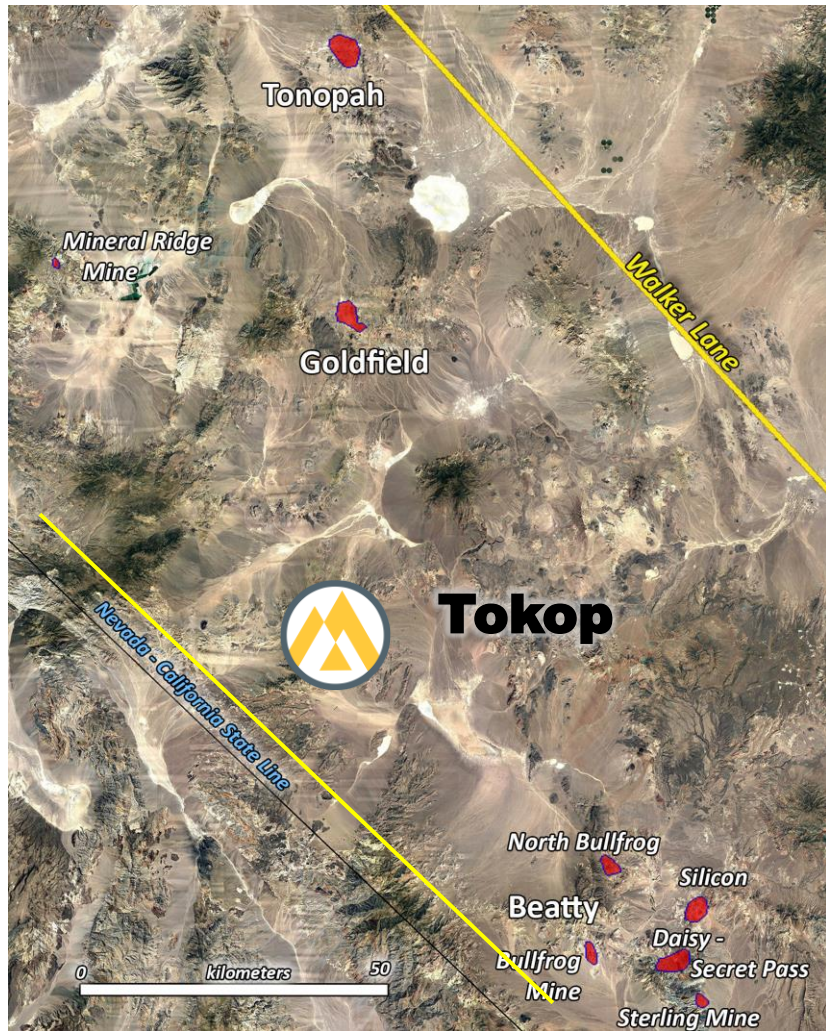
July 2024

- **Drilling underway at PWC**

2025

- **Drilling**

TOKOP GOLD PROJECT - OVERVIEW



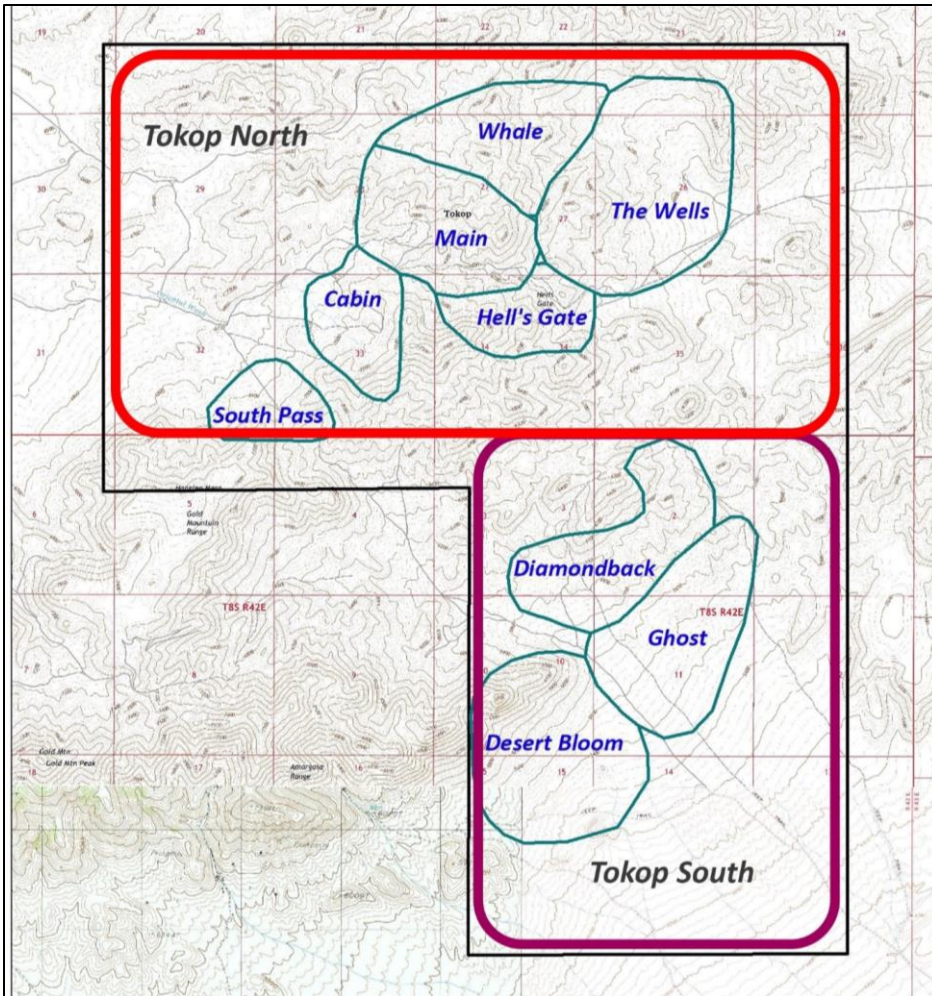
The **100% owned Tokop Project** is located in Esmeralda County (Tokop Mining District), approximately 80 km south of Tonopah.

Deposits currently being mined or developed in the area include:

- 📍 Mineral Ridge Mine
- 📍 Bullfrog
- 📍 North Bullfrog
- 📍 Silicon
- 📍 Daisy-Secret Pass deposits

Nearby districts of Tonopah, Goldfield, and Bullfrog (near Beatty, NV) accounted for historical production of more than **8.3 million ounces gold** and **143.5 million ounces of silver**.

TOKOP GOLD PROJECT (NORTH AND SOUTH)



The **Tokop Gold Project** consists of more than 31 sq kms of land and hosts two types of mineralized systems.

Tokop North

- 🏔 System: reduced intrusive-related gold (“**RIRG**”)/Orogenic system
- 🏔 Sub areas: Whale, Main, The Wells, Hell’s Gate, Cabin and South Pass

Tokop South

- 🏔 System: low sulfidation, epithermal system (akin to the Bullfrog Mine)
- 🏔 Sub areas: Diamondback, Ghost, Desert Bloom

TOKOP NORTH – ROCK & SOIL SAMPLING

Surface Rock Sampling Highlights:

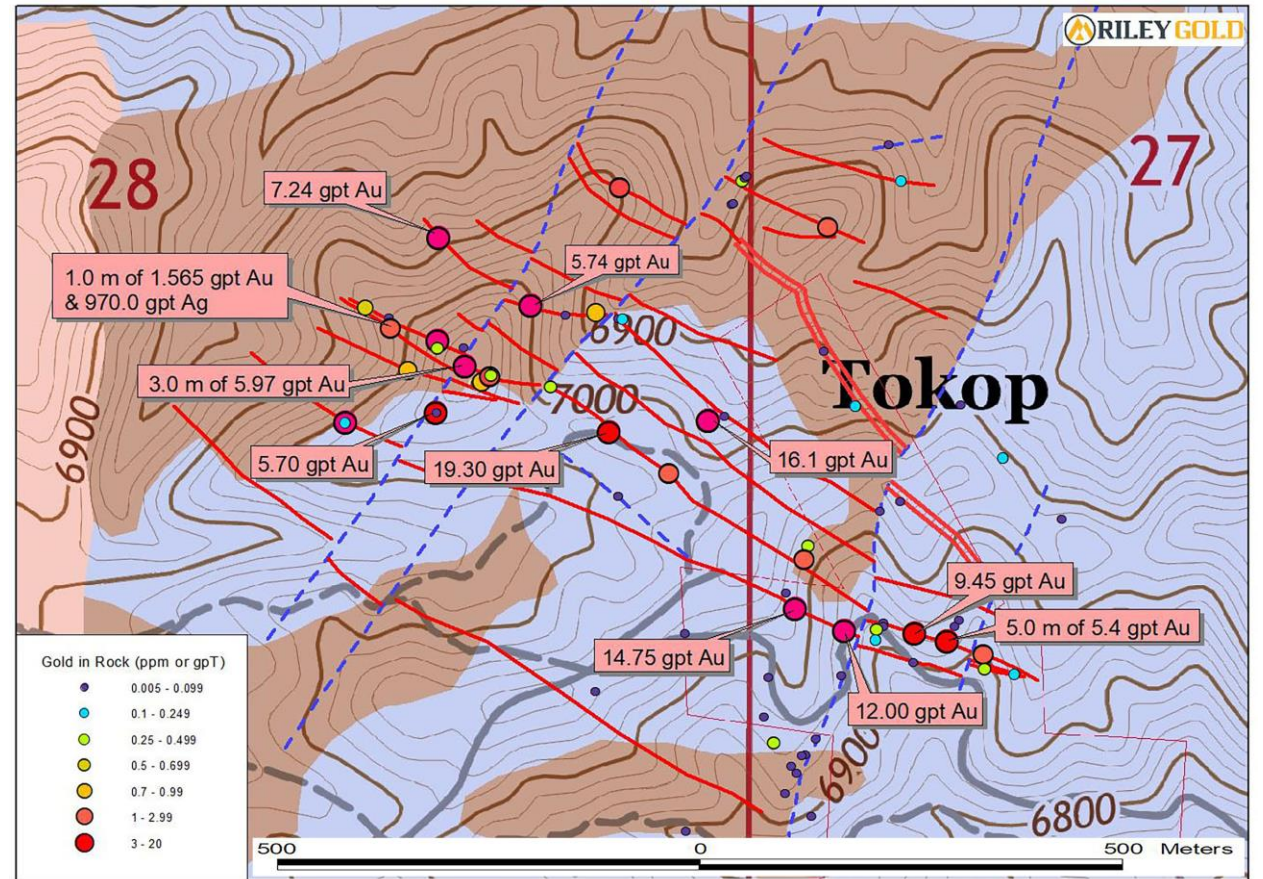
- 🏔 Spot sample of **71.73 gpt gold & 970 gpt silver**
- 🏔 Spot sample of **19.3 gpt gold & 104 gpt silver**
- 🏔 Spot sample of **15.0 gpt gold & 24 gpt silver**
- 🏔 Spot sample of **14.75 gpt gold & 179 gpt silver**
- 🏔 Spot sample of **13.73 gpt gold & 30 gpt silver**

Chip channel Sampling Highlights:

- 🏔 5.0 m of **5.4 gpt gold**
- 🏔 3.0 m of **5.97 gpt gold**
- 🏔 1.0 m of **7.32 gpt gold**

Surface Soil Sampling Highlights:

- 🏔 1.395 gpt gold
- 🏔 0.967 gpt gold
- 🏔 0.786 gpt gold



TOKOP NORTH – 2013 DRILLING



Significant intercepts from 2013 drilling program:

- 🏔️ 12m at 2.54 g/t Au
- 🏔️ 18m at 1.25 g/t Au
- 🏔️ 30m at 0.72 g/t Au
- 🏔️ 14m at 0.94 g/t Au

Geological Setting:

At Tokop North, **gold mineralization** is hosted in Juro-Cretaceous granites and Precambrian carbonates and skarn, similar to that being developed at the Eagle Mine (Dublin Gulch), Yukon or Fort Knox Mine near Fairbanks, Alaska. Higher grade gold is hosted in shears and closely spaced veins.

TOKOP NORTH – 2021 DRILLING

2021 Drilling:

TKR-21C: **9.32 gpt gold** over 2.6 metres (“m”) from 46.2 m

- Ⓜ including **17.1 gpt gold** over 1.4 m plus an additional **235 gpt silver**

TKR-22C: **1.67 gpt gold** over 5.1 m from 31.9 m

- Ⓜ including 0.4 m of **3.73 gpt gold** plus an additional **82.2 gpt silver**

- Ⓜ including 0.8 m of **4.02 gpt gold**

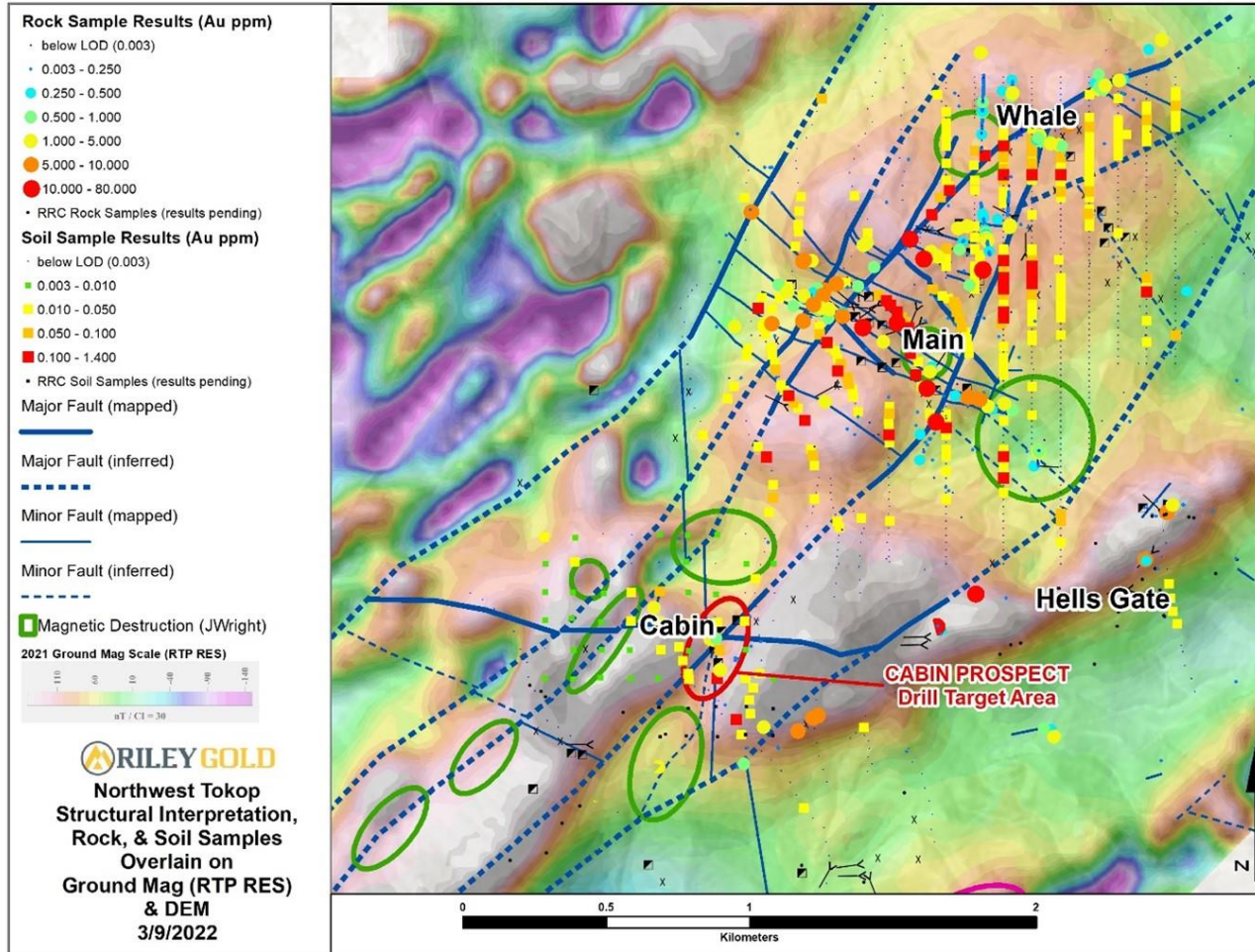
TKR-23C: **2.62 gpt gold** over 5.94 m from 102.3 m


- Ⓜ **4.98 gpt gold** over 2.92 m plus an additional **97.3 gpt silver** over 1.40 m

Trench sampling away from drilling has returned values including **18m of 1.94 g/t gold**. Mineralization is open in several directions.

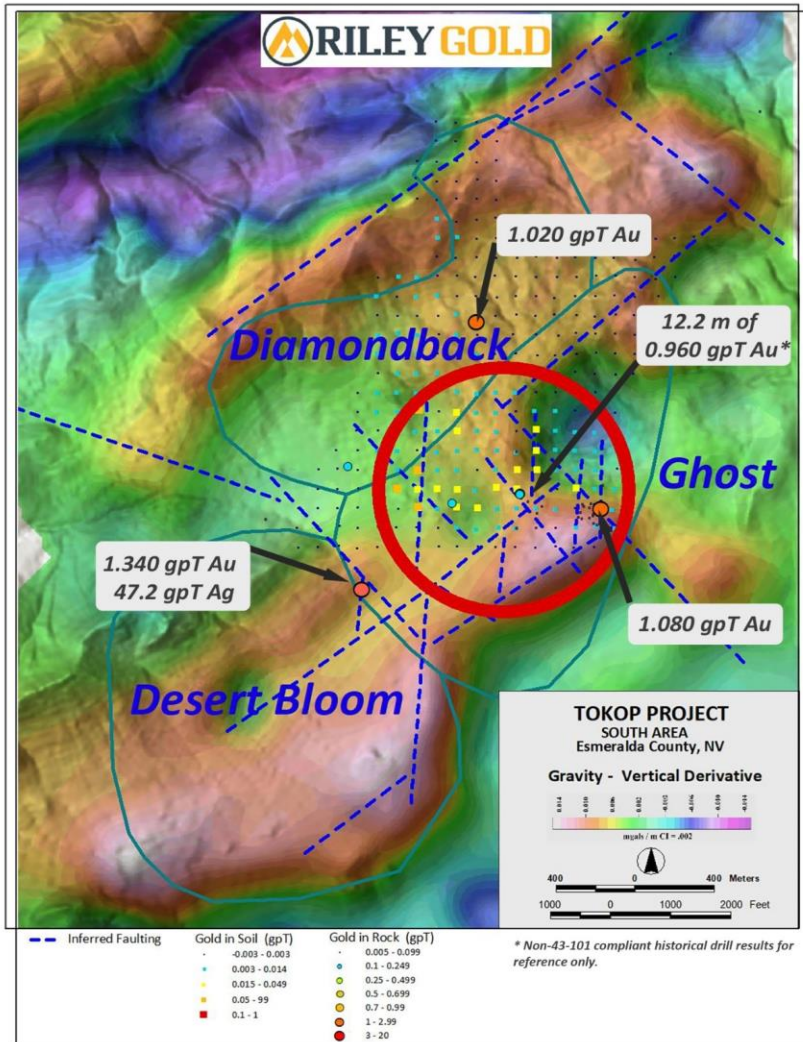


TOKOP NORTH – GEOPHYSICS AND STRUCTURES TARGETS



-  New interpretation of Tokop indicates two types of mineralization within the project area.
-  Tokop North is predominately a reduced intrusive-related gold (“RIRG”)/orogenic system in contrast to the southern portion, which is more prevalent to a low sulfidation, epithermal system
-  RIRG system shows similarities to large mines in the Tintina Gold Belt of central Alaska and parts of the Yukon (Fort Knox, Pogo Gold Mine)
-  Several anomalies confirmed previously identified high-quality drill targets

TOKOP SOUTH - GEOPHYSICS AND STRUCTURE TARGETS



- 📍 Tokop South exhibits intense epithermal alteration, stockwork and veins at surface
- 📍 Hosts several old prospects, shafts and adits
- 📍 Rock sampling has yielded of more than 1.3 gpt gold, and soil sampling revealed anomalous gold and epithermal pathfinder trends
- 📍 At Ghost, northerly trending epithermal veins and structures are analogous to stockwork zones in the Bullfrog Mine District, representing in very prospective drill targets
- 📍 Historic drilling intercepted low sulfidation epithermal veins striking ~N-S:
 - 12.2 m 0.96 gpt gold, including 6.1 m 1.6 gpt gold.

STEADY PROGRESS AT TOKOP

APR 2021

- **125 rock samples total**, returned assays from trace to significant high-grade material up to **19.3 gpt gold** and **970 gpt silver**
- Initial drill program underway, **3000 metres** over **18 holes**

JUN 2021

- Assays from **3 drill holes** including **17.1 gpt gold** over **1.4m** and **235gpt silver**
- Recent surface rock sampling revealed mineralization up to **71.73 gpt gold** and up to **970 gpt silver** in sheeted quartz veins, stockworks, and shear zones within the granites.

OCT 2021

- Ground magnetic survey covering approximately **11 square km** completed
- Soil geochemistry and mapping program underway

JAN 2022

- Assays from final 9 drill holes including **2.63 gpt gold** over 0.7m
- Over 330 soil samples and up to 400 rock samples taken with assays pending

MAR 2022

- Geophysical interpretation indicate two styles of mineralization at Tokop: “RIRG” and low sulfidation, epithermal systems
- Tokop “North” geophysical results confirmed priority drill targets; Tokop land position increased by 50% to **31 sq km**.

APR 2022

- Tokop “South” exhibits low sulfidation, epithermal vein and structures, analogous to stockwork zones in the Bullfrog Mine District

UPCOMING

- Additional **surface samples, soils** and **trenching** (including specific mapping and sampling) results
- **3-dimensional geologic and alteration model** for better targeting the next round of drilling based on surveys, mapping and soil (Ph) geochemistry (of up to several hundred samples)
- Phase 2 drill program planning



 **RILEY GOLD**
TSXV: **RLYG** | OTCQB: **RLYGF**

For more information, please contact us at:

Suite 2390-1055 West Hastings St.

Vancouver, B.C Canada V6E 2E9

Tel: 604.443.3831 | Toll-free: 1 (877) 792-6688

E-mail: thilditch@rileygoldcorp.com



rileygoldcorp.com